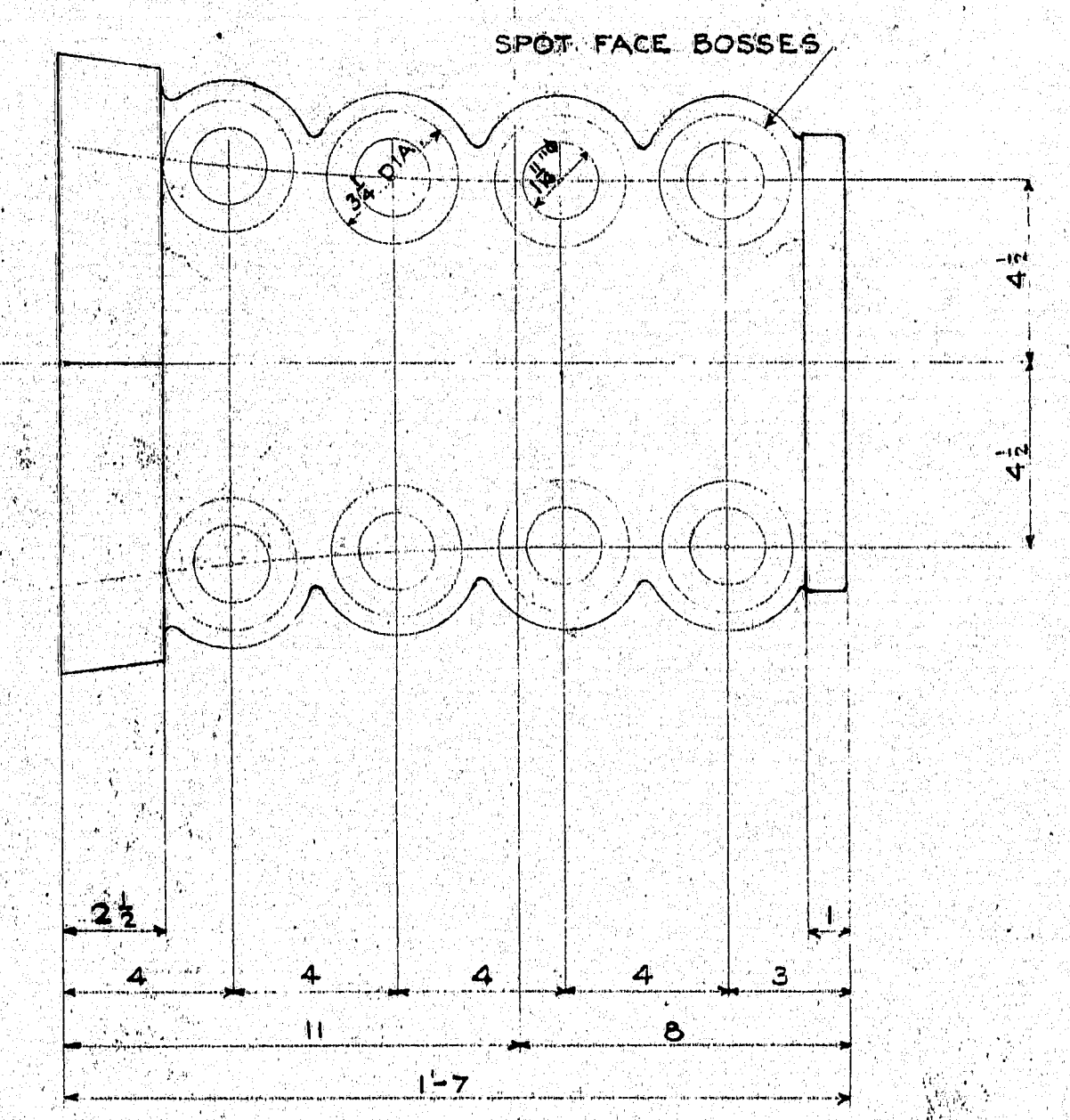


DETAIL OF HIGH TENSION BOLTS
32 REQUIRED



ELEVATION OF SPLAY CASTING

4 REQUIRED CAST STEEL ANNEALED
COMPLETE WITH HIGH TENSION BOLTS

WEIGHT OF ONE SPLAY CASTING = 450^{LB} TOTAL FOR BRIDGE = 1800^{LB}
WEIGHT OF HIGH TENSION BOLTS FOR ONE CASTING = 90^{LB} TOTAL FOR BRIDGE = 360^{LB}

SUPERSTRUCTURE	
P.W.A. PROJECT NO. ME 1010-D	
DEER ISLE SEDGWICK BRIDGE DISTRICT	
BRIDGE OVER EGGEMOGGIN REACH	
FROM LITTLE DEER ISLE TO SEDGWICK	
HANCOCK COUNTY, MAINE	
SPLAY CASTINGS	
ROBINSON AND STEINMAN	SCALE 3" = 1'-0"
ENGINEERS	DRAWING NUMBER
NEW YORK CITY	RS 3310-3109
	SEPTEMBER 4

7-24-37 Revised as built